

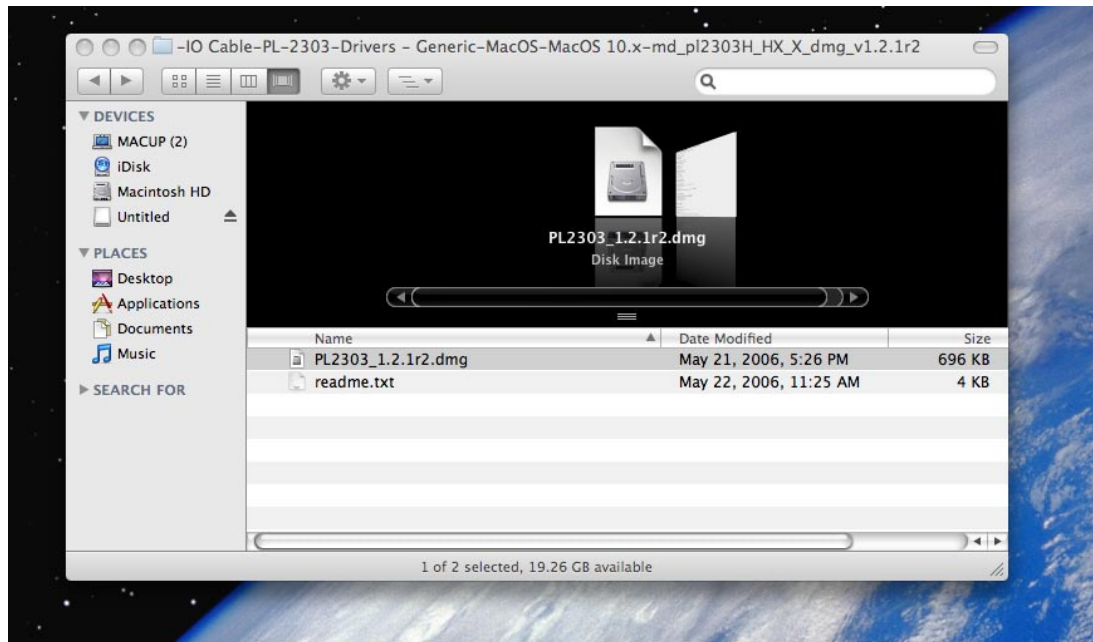
SatellitePhoneStore:



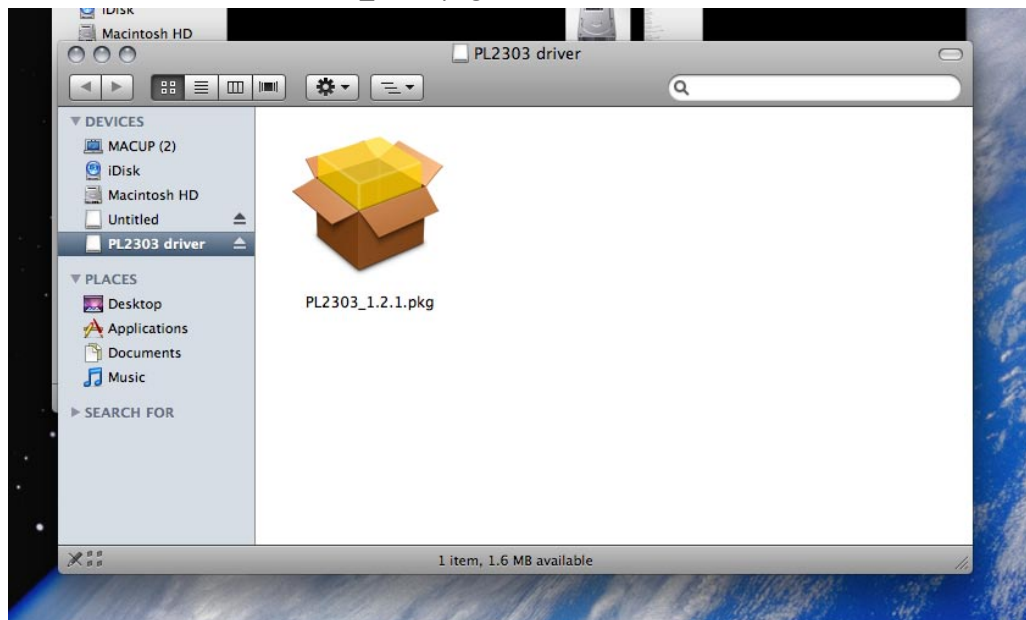
Iridium Satellite Data Kit Connection Guide for Mac OS X 10.5 Leopard

STEP 1: INSTALL USB TO SERIAL ADAPTER

Open the CD provided by SPS and double click the "PL2303_1.2.1r2.dmg" file.

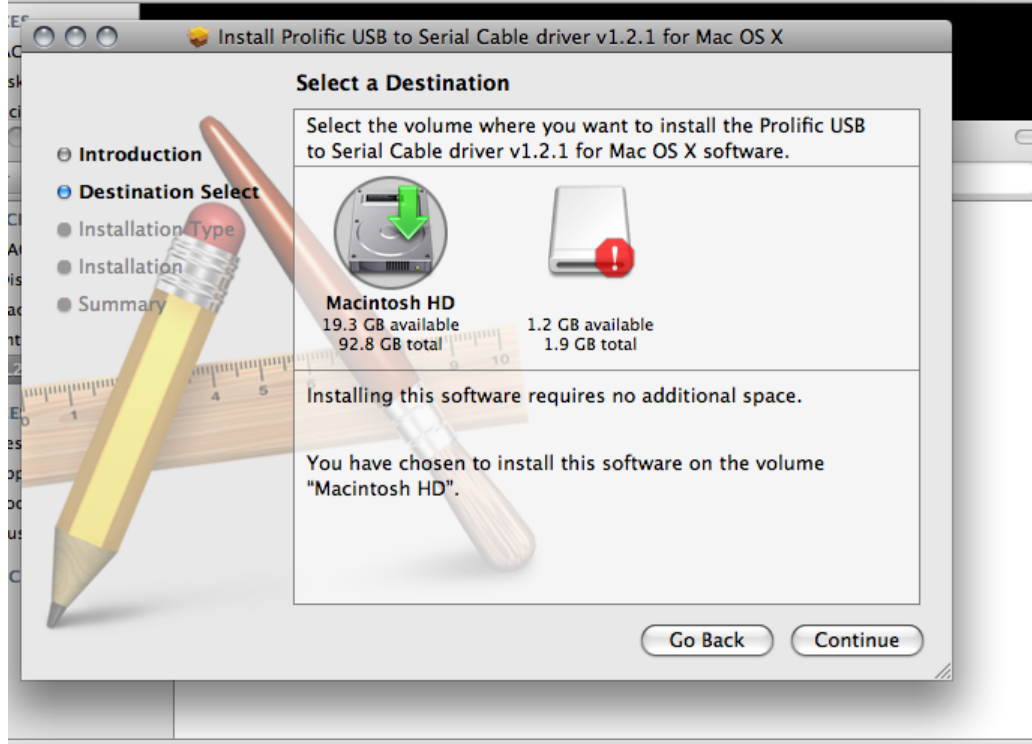


Now double click the "PL2303_1.2.1.pkg" file.

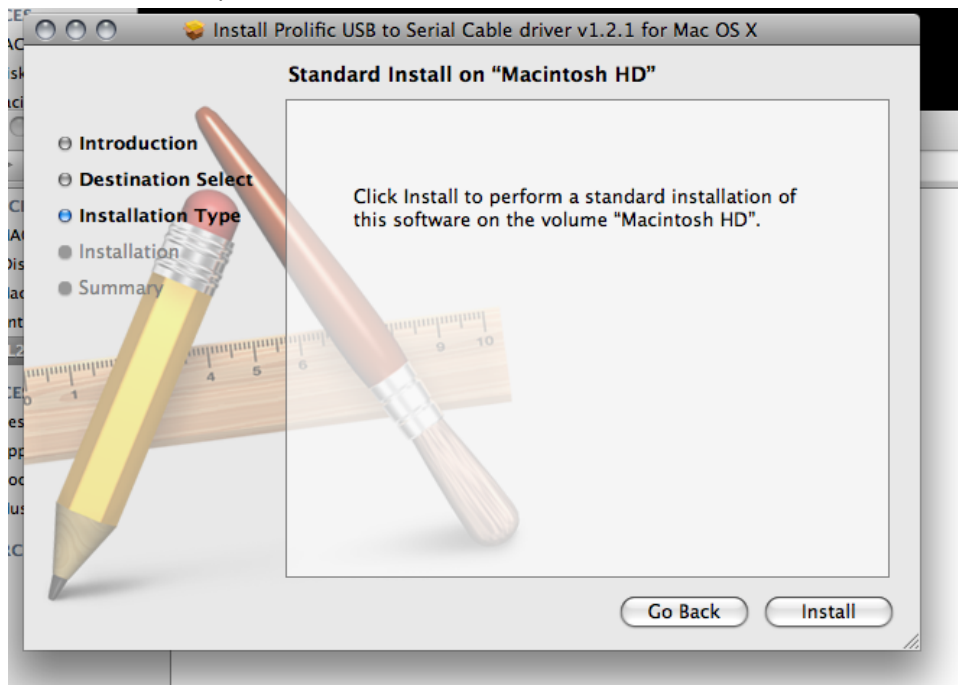




Please choose the Macintosh HD for installation of the drivers.



Select "Install" to perform the driver installation.

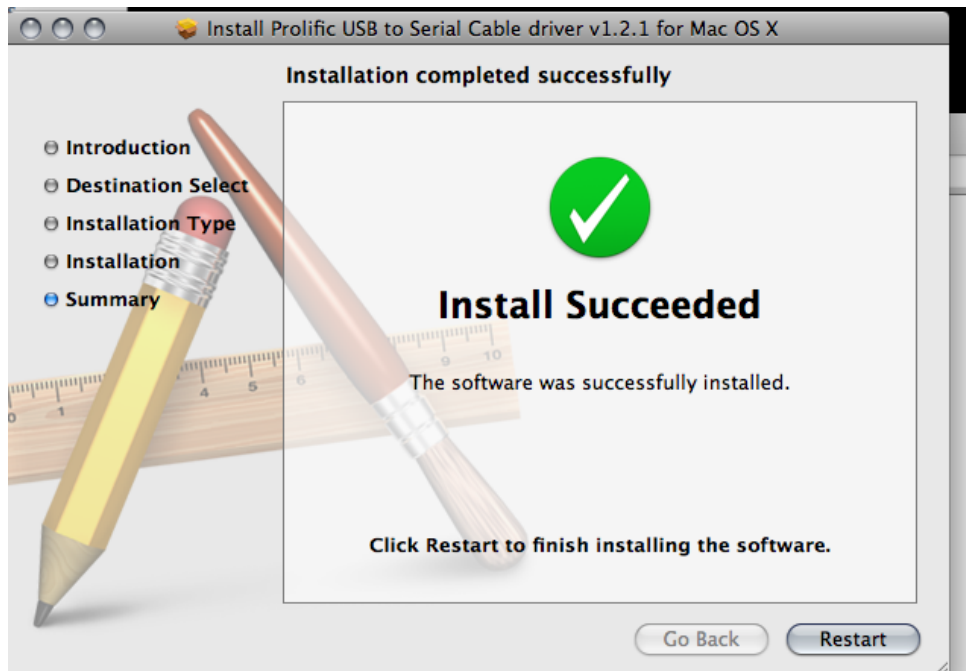




Installing the software will require a restart of the computer.



Once the installation is finished select the "Restart" button and the computer will restart.

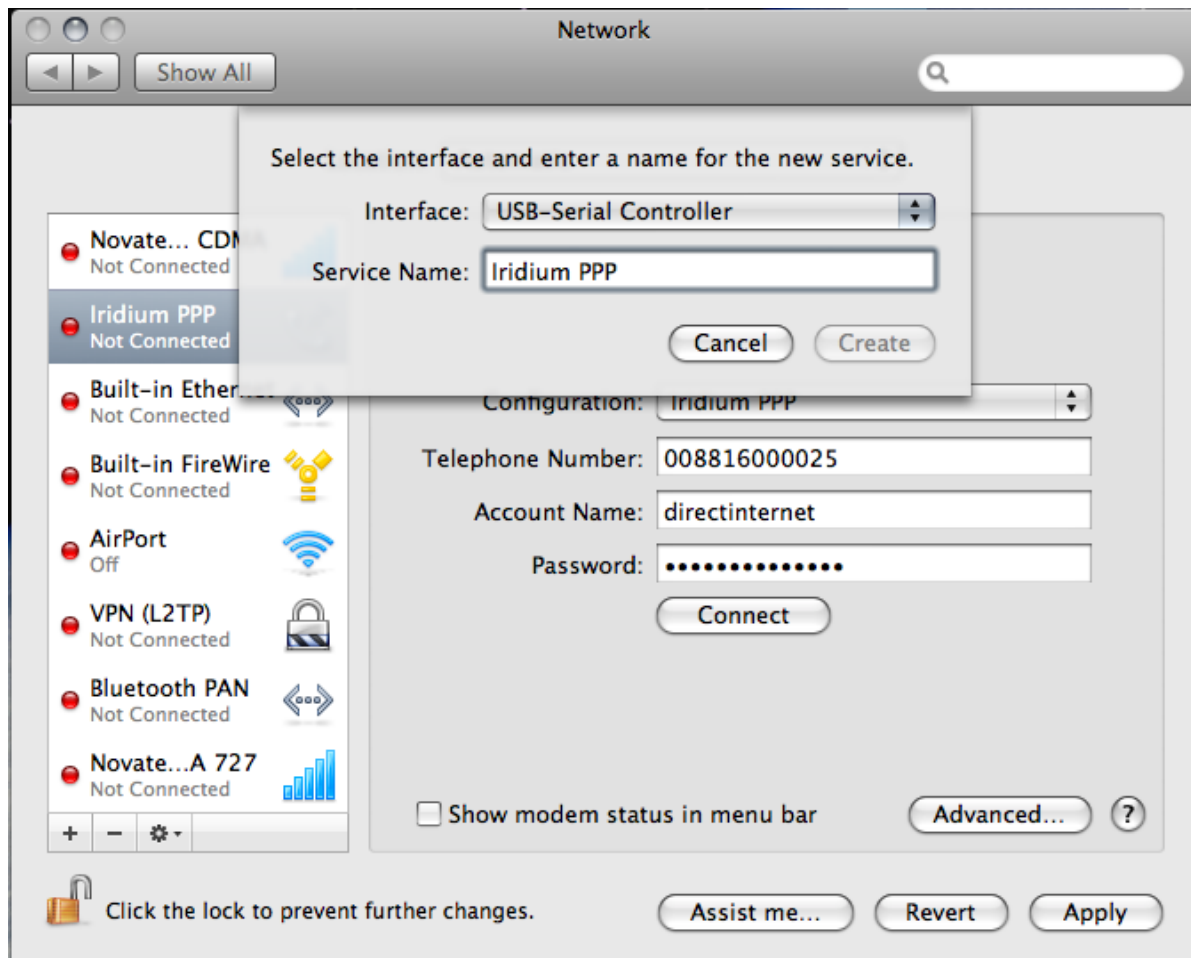




STEP 2: MAKE A NEW DIAL UP CONNECTION

After restarting the computer open “System Preferences” and select “Network”.

Click the “+” character to add a new connection, select “USB-Serial Controller” as the interface, call the connection “Iridium PPP” and then click the button “Create”.

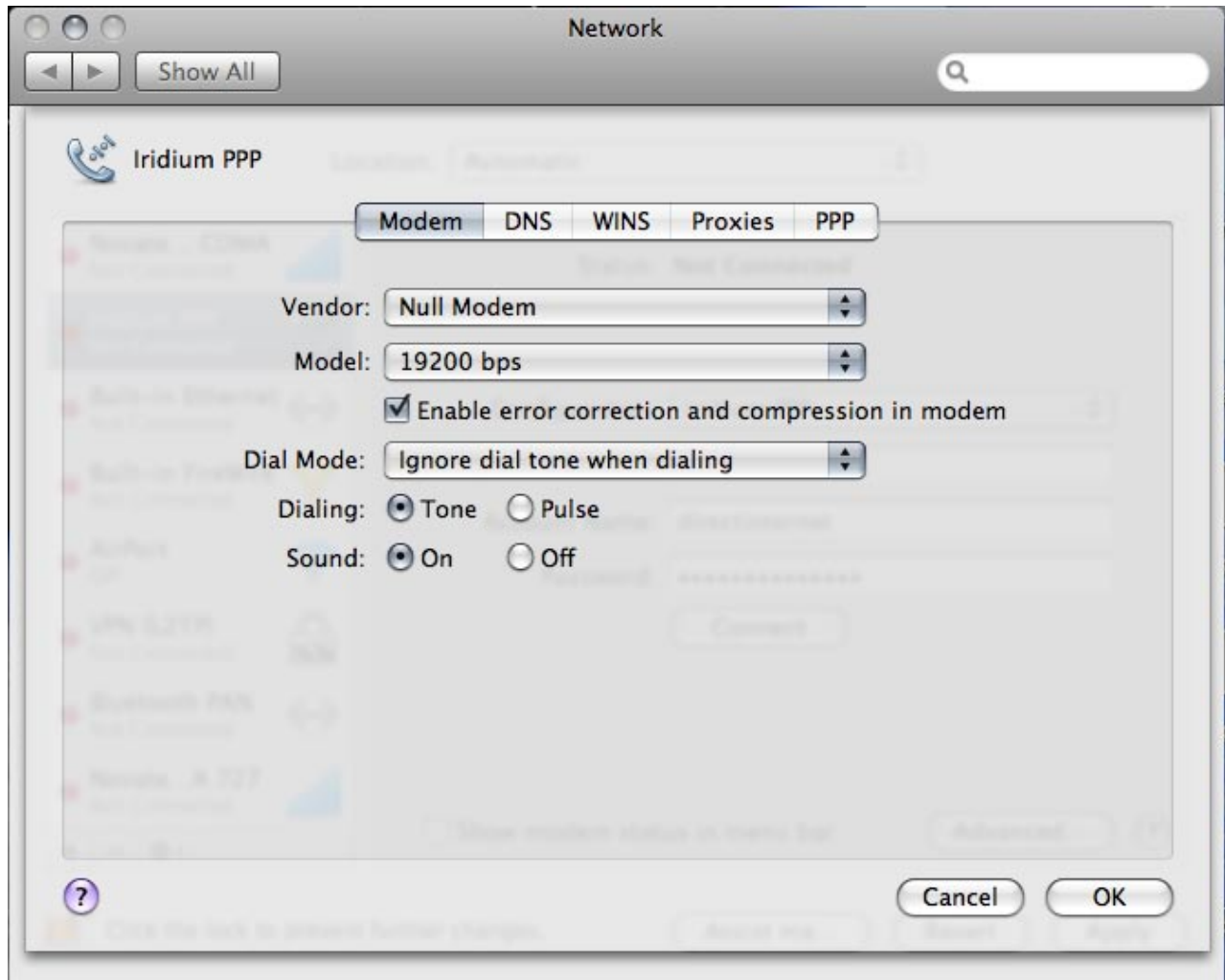


Enter “008816000025” for the Telephone number, “directinternet” for the user name and password then select the “Apply” button.

SatellitePhoneStore:



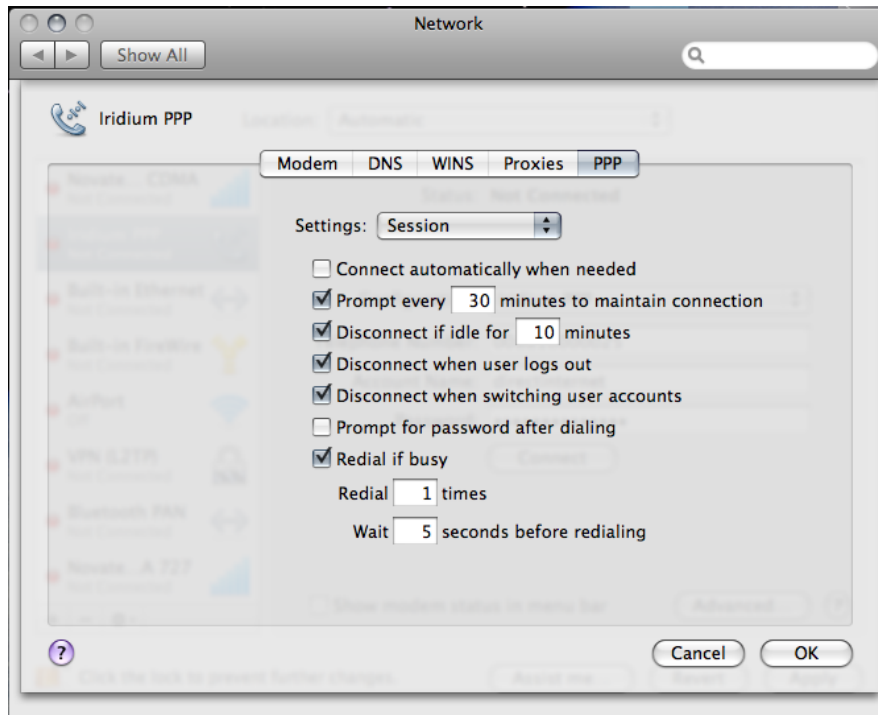
Now select the "Advanced" button, please make sure your settings are exactly as show below.



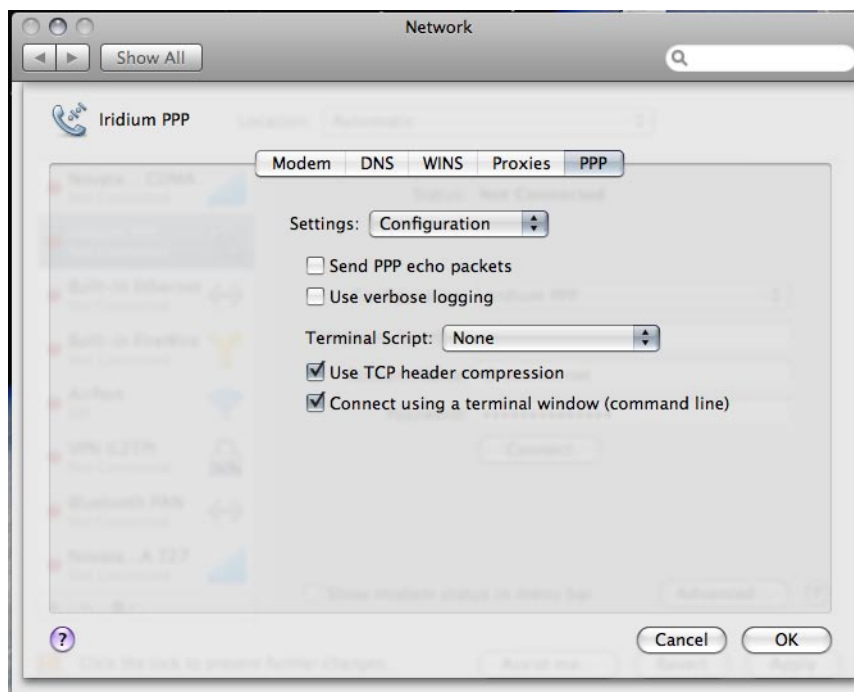
SatellitePhoneStore:



Now select the tab “PPP” and make sure the settings for “Session” are exactly the same as show below.



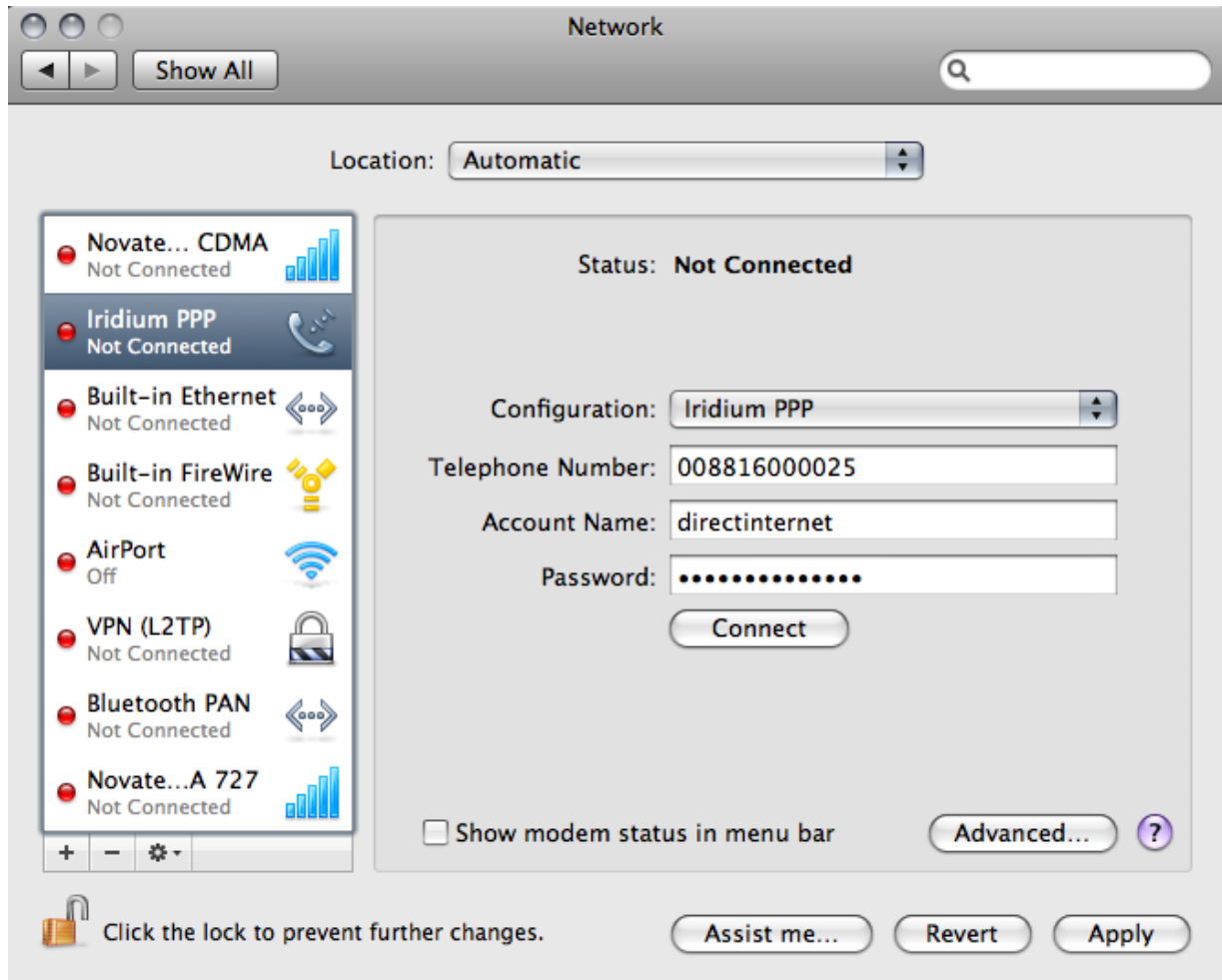
Now change “Session” to “Configuration” and make sure the settings are exactly as show below and then select the “OK” button.



SatellitePhoneStore:



We should now be back at the “Network” dialog box; please click the “Connect” button.



SatellitePhoneStore:



Upon connecting we will be prompted with a Terminal, please type the following commands correctly.

“AT”

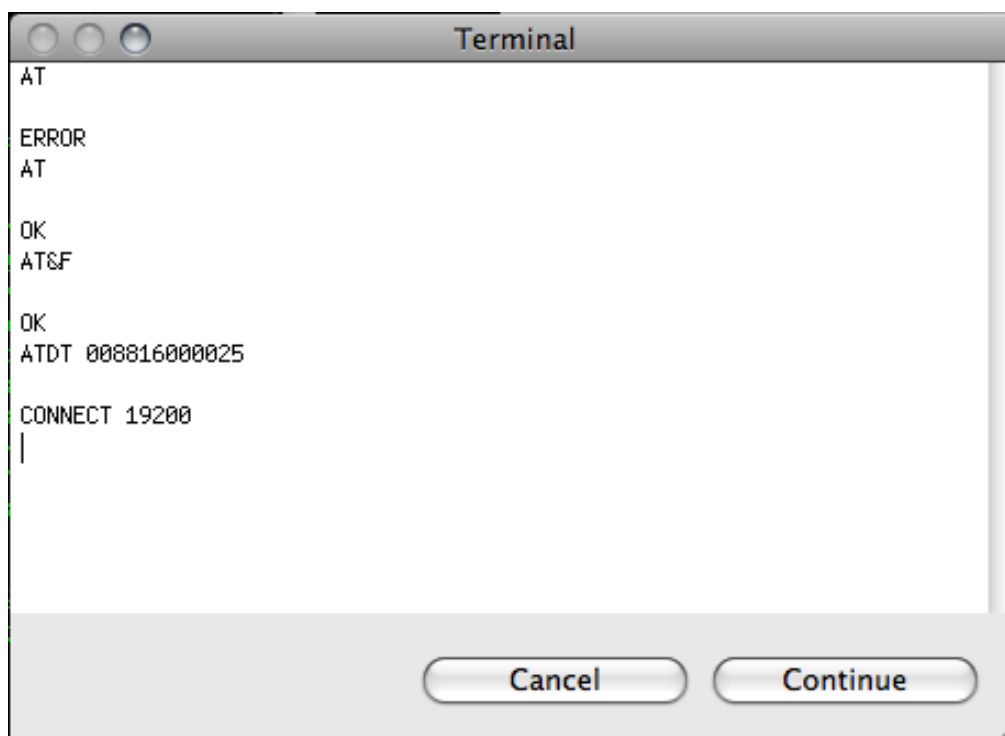
(Returns “OK” if the Iridium phone is ready)

“AT&F”

(Returns “OK” and clears out any old commands)

“ATDT 008816000025”

(Returns “Connect 19200” when a dial up call is placed successfully)

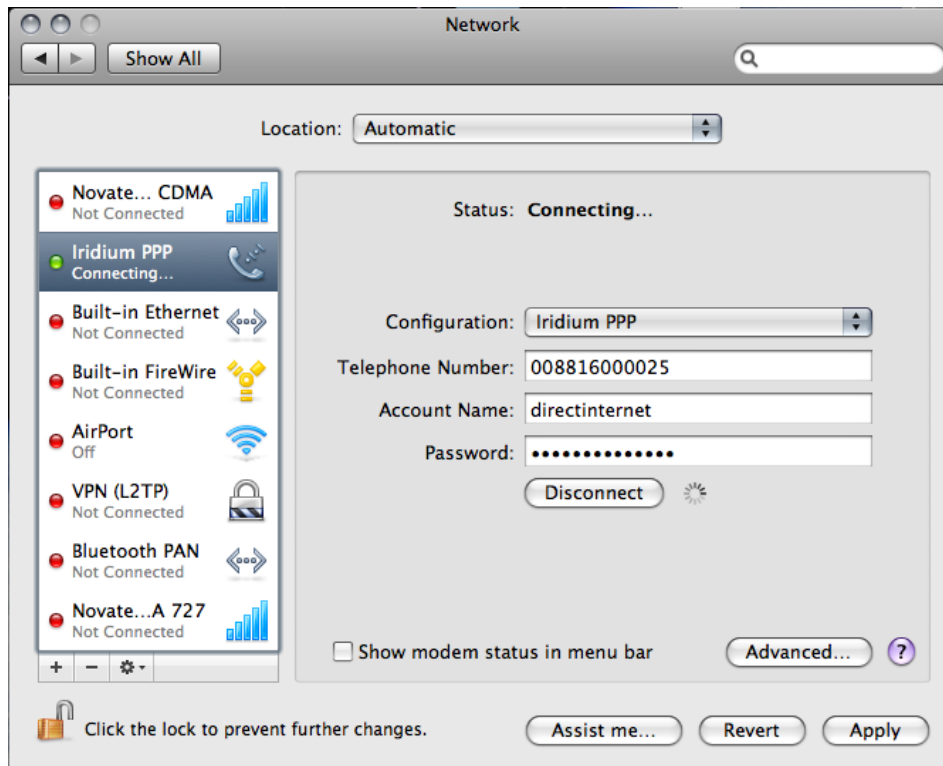


At this point please click the “Continue” button and you will return to the “Network” window.

SatellitePhoneStore:



The Status should display "Connecting"



Once the dial up connection has been established the Iridium Phone will read "Data Call in Progress" and the Mac will show "Connected" under status. The Iridium Satellite data connection is now active.

